

TOWN OF MAMMOTH LAKES - DEPARTMENT OF PUBLIC WORKS



SECTION 500
LANDSCAPE AND EROSION CONTROL

LAST REVISION : JULY 2013

GENERAL REFERENCES FOR LANDSCAPING AND EROSION CONTROL

1. WATER POLLUTION CONTROL SHALL CONFORM TO THE PROVISIONS IN SECTION 13, "WATER POLLUTION CONTROL" OF THE CSS AND THE CALIFORNIA STORM WATER BEST MANAGEMENT PRACTICES HANDBOOK.
2. LANDSCAPING SHALL CONFORM TO THE PROVISIONS IN SECTION 20, "LANDSCAPE" OF THE CSS.
3. EROSION CONTROL SHALL CONFORM TO THE PROVISIONS IN SECTION 21, "EROSION CONTROL" OF THE CSS AND THE CALIFORNIA STORM WATER BEST MANAGEMENT PRACTICES HANDBOOK.

TOWN OF MAMMOTH LAKES - DEPARTMENT OF PUBLIC WORKS

**GENERAL REFERENCES FOR LANDSCAPE
AND EROSION**

STANDARD PLAN

500-2

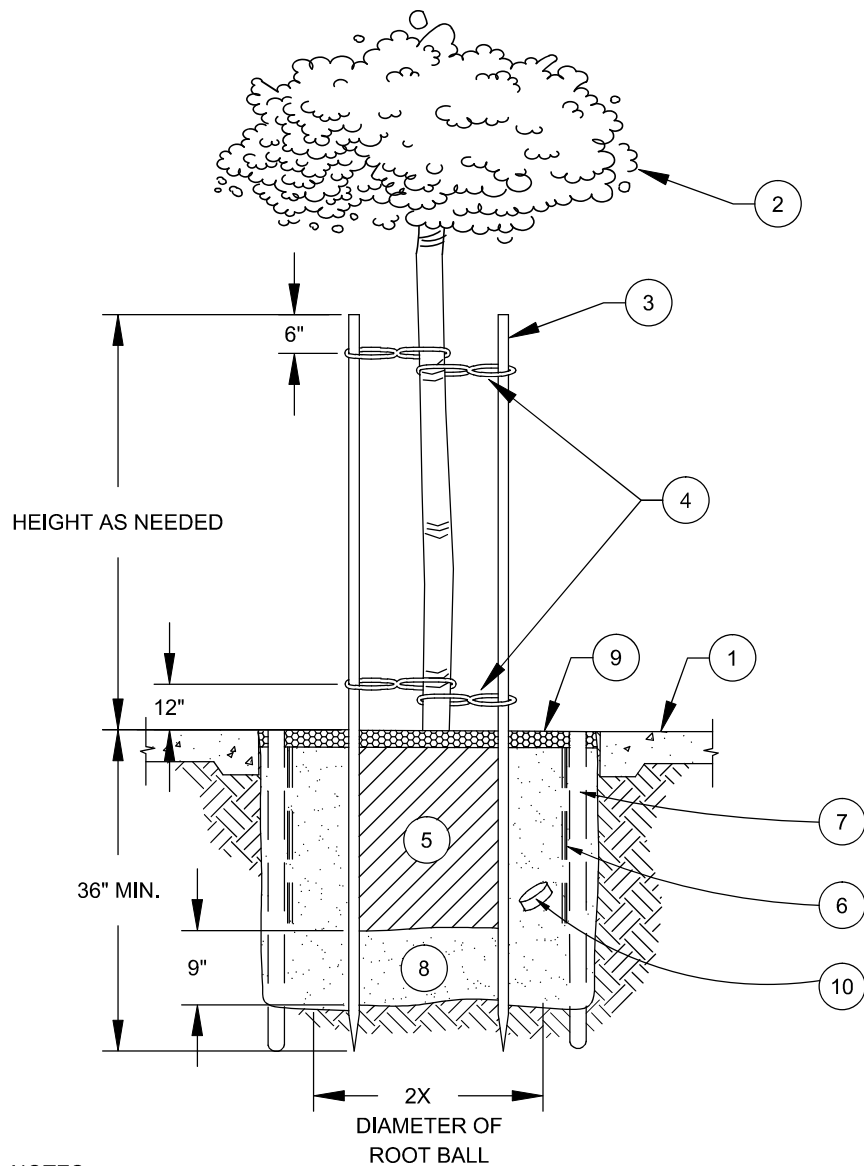
SHEET 1 OF 1



PUBLIC WORKS

DIRECTOR APPROVAL: _____

DATE: **May 7, 2014**



NOTES

1. CONCRETE SIDEWALK OR CURB
2. 15 GALLON TREE (MIN SIZE)
3. LODGEPOLE PINE POLE TREATED W/ COPPER NAPHTHENATE OR EQUAL
4. 2 PAIRS COMMERCIAL RUBBER TREE TIES IN "FIGURE 8" PATTERN
5. ROOTBALL
6. TYPAR BIOBARRIER-INSTALL 6" AWAY FROM ALL EDGES OF SIDEWALK OR CURB
7. 3" PERFORATED DRAIN PIPE, FILLED WITH DRAIN ROCK, INSTALL TO 6' IN DEPTH. 2 PER TREE WELL
8. BACK FILL MIX, PER SPECIFICATIONS
9. 2" LAYER OF DECOMPOSED GRANITE, INSTALL AS TO BE FLUSH W/ SIDEWALK OR CURB
10. FERTILIZER TABS PER PLANTING NOTES

TOWN OF MAMMOTH LAKES - DEPARTMENT OF PUBLIC WORKS



TREE PLANTING

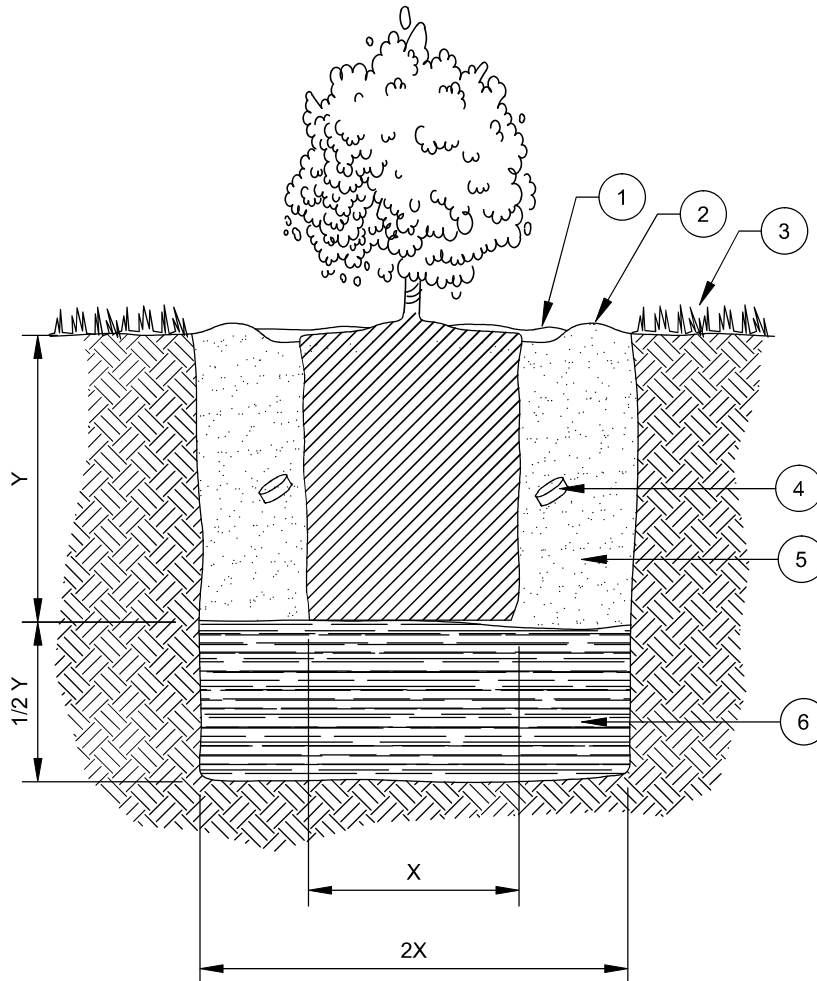
PUBLIC WORKS
DIRECTOR APPROVAL: *[Signature]*

DATE: May 7, 2014

STANDARD PLAN

501-0

SHEET 1 OF 1



○ NOTES

1. 2" LAYER OF APPROVED MULCH.
2. 4" HIGH SAUCER RIM.
3. FINISH GRADE. KEEP ROOT CROWN 1/2" ABOVE FINISH GRADE.
4. 7 GRAM PLANT TABS: 1 GALLON = 3 TABS 5 GALLON = 9 TABS.
5. PREPARED BACKFILL. SEE GENERAL PLANTING NOTES.
6. SCARIFY 1/2 DEPTH OF ROOTBALL AND COMPACT FIRMLY. PLACE NO ORGANIC AMENDMENT IN THE ZONE BENEATH THE ROOTBALL.

TOWN OF MAMMOTH LAKES - DEPARTMENT OF PUBLIC WORKS



SHRUB PLANTING

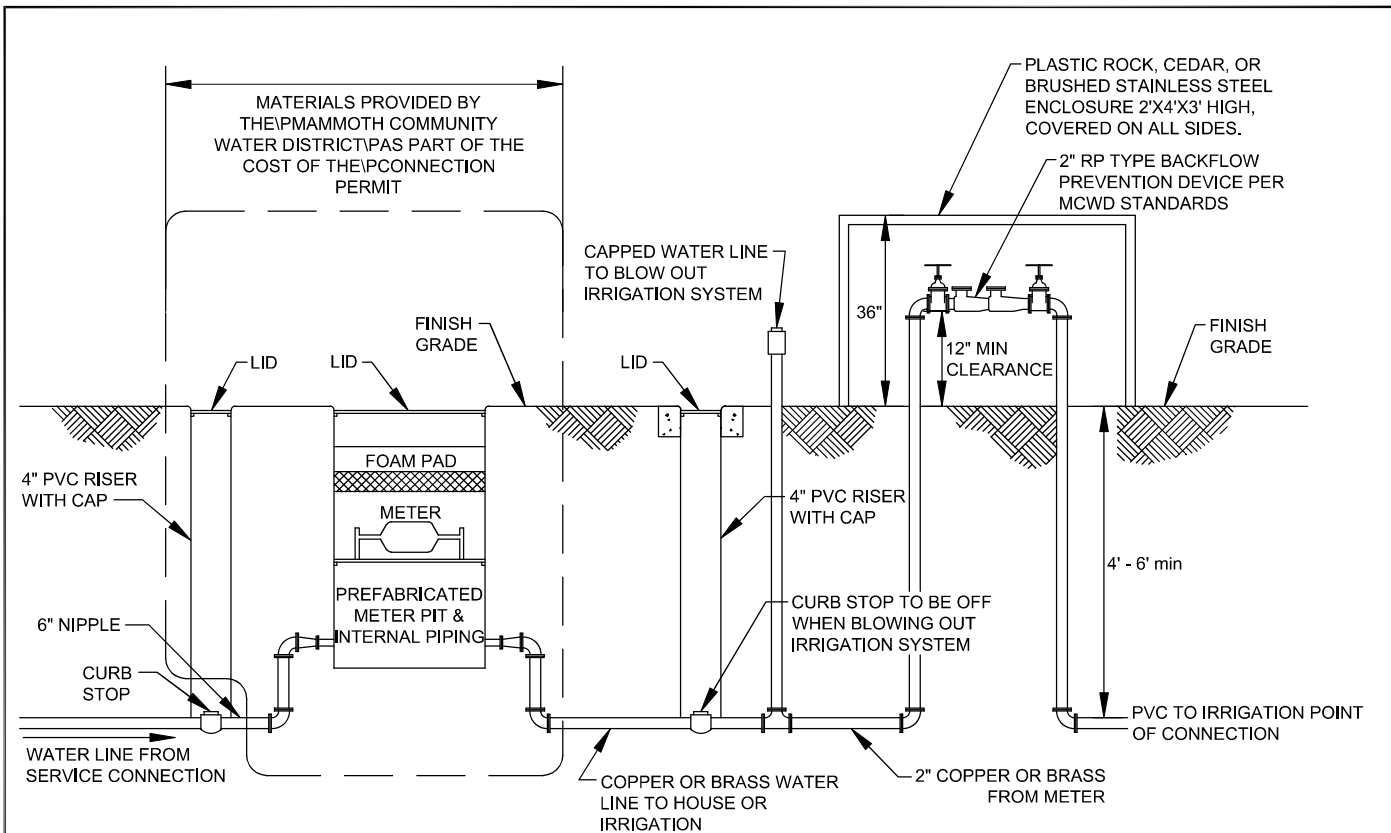
PUBLIC WORKS
DIRECTOR APPROVAL: *[Signature]*

DATE: **May 7, 2014**

STANDARD PLAN

502-0

SHEET 1 OF 1



METER & BACKFLOW PREVENTER DETAIL

NTS

GENERAL NOTES FOR WATER METER AND BACK FLOW PREVENTER ASSEMBLY

1. ALL SPOOLS AND 90° ELBOWS TO BE DUCTILE IRON.
2. ALL CONNECTIONS TO BE FLANGED ENDS.
3. GALVANIZED PIPE SHALL NOT BE USED

WATER TURNOFF AND WINTERIZATION PROCEDURE

1. TURN OFF GATE VALVE AT WATER SOURCE SIDE OF ASSEMBLY.
2. OPEN VALVES LOCATED AT BOTH ENDS OF BACK FLOW PREVENTER.
3. REMOVE DRAIN PLUGS LOCATED IN THE FOLLOWING LOCATION:
 - A. 2 PLUGS AT PRESSURE REGULATOR.
 - B. 3 PLUGS AT BACK FLOW.
 - C. 1 PLUG AT PRESSURE RELIEF VALVE.
4. REVERSE PROCEDURE FOR WATER TURN ON. (#4 BARS 18" LONG)
5. PLACE A WEAKENED PLANE OR CONTACT JOINT WHERE LONGITUDINAL ALLEY GUTTER JOINS CONCRETE ALLEY INTERSECTION.
6. ALL EXPOSED CORNERS ON PCC GUTTERS SHALL BE ROUNDED WITHIN 1/2" RADIUS.
7. CONCRETE SHALL BE INTEGRAL WITH CURB UNLESS OTHERWISE SPECIFIED.

TOWN OF MAMMOTH LAKES - DEPARTMENT OF PUBLIC WORKS



IRRIGATION STANDARDS

PUBLIC WORKS
DIRECTOR APPROVAL: *[Signature]*

DATE: **May 7, 2014**

STANDARD PLAN

503-0

SHEET 1 OF 1